

ST-CLÉMENT FARM

PREFIX
ST-CLÉMENT



OWNERS: PASCALE DAOUST & JULIEN LEPAGE

365 CHEMIN DE LA BEAUCE,
BEAUHARNOIS (QUEBEC) J6N 3B8

HERD SUMMARY:

125 HEAD, INCLUDING 58 LACTATION COWS

CLASSIFICATION: 17 VG · 38 GP · 7 G

PRODUCTION AVERAGE:

8,810 KG 4.3%F 3.4%P (261-273-269)

The story of St-Clément Farm began in 1800 when the Daoust ancestors crossed Lake St-Louis to visit farms in Beauharnois and decided to settle there. St-Clément Farm has had purebred Ayrshire animals since Edmour, third generation to operate the farm, acquired it. Jean-Paul Daoust took over in 1955, then Jacques and Marie-Claude Daoust became owners in the '80s. Since January 2012, Pascale Daoust and her partner Julien Lepage are the new owners and sixth generation to run the family farm. Pascale and Julien are in charge of the whole operation, but Jacques and Marie-Claude remain present to help out, which is always appreciated. The family was awarded the title of Master Breeder in 2011.

The St-Clément herd consists of 58 cows in lactation and in 2018 the production average was 8,810 kg of milk with 4.3% fat and 3.4% protein for a BCA of 261-273-269. The herd's classification shows 17 VG, 38 GP and 7 G. Pascale has also worked many times on exhibits at shows and at prestigious Ayrshire sales. Known for its high production, the St-Clément herd has been part of Canada's top ten for several years already. One of St-Clément Farm's greatest successes and one of their top sources of pride is to have been the first in Canada to maintain a production average of 9,000 kg during five consecutive years.



ST-CLÉMENT FARM

PREFIX
ST-CLÉMENT



Our objective is a balanced cow with very good production and high component yields. The cows in lactation are kept in a tie-stall barn, while the dry cows, the heifers, and the calves are housed in a free-stall barn.

In 2015, we expanded in order to increase our herd, improve our dry cows' comfort, add a tunnel ventilation system, and automate TMR feeding.

The Daoust family did not hesitate to use embryo transfers to improve its herd. Cows such as St-Martin Everest ET, EX-90, Desblay Precibelle, EX-90, Blackaddar Peace 2, St-Clément Falida, VG-85, Rosayre Reality's Keely, VG, Kildare Reality Vanout, VG, and Forever Schoon Pearlina, VG-86, left a total of 75 descendants on the farm. Falida is the dam of St-Clément Edmour, a son of B-Jurist, famous for transmitting to his daughters the capacity to produce high component yields, as well as very good feet and legs. St-Clément Fabio is another proven breeder, also son of B-Jurist, very good at improving production. Vanout is the dam of St-Clément Voyager, a son of Bendig. These three bulls belong to Semex Alliance.

As far as crops go, the farm consists of 500 acres, 150 of which are cultivated in corn, 150 in soy, 75 in wheat, and 125 in hay.



MONEY MAKING

AYRSHIRES

PREFIX
MONEY MAKING

OWNERS:

MÉLISSA SYLVESTRE & ANDREW SCOBLE

1599 FERTILE CREEK, HOWICK (QUEBEC) J0S 1G0

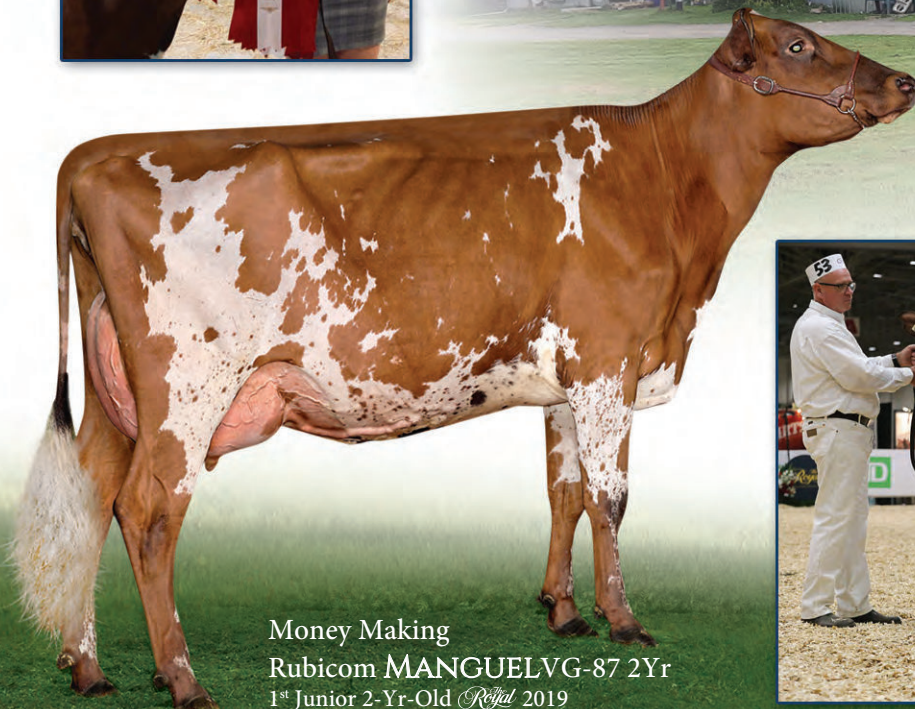
HERD SUMMARY:

80 HEAD, INCLUDING 45 LACTATION COWS

CLASSIFICATION: 1 EX MULT · 1 EX · 19 VG · 26 G

PRODUCTION AVERAGE: 8,200 KG 4.15%F 3.29%P

In 2017, we were forced to move our herd. Our lease came to an end, but we were fortunate enough to find a new place within our municipality, one that we were able to purchase. We have a barn, a pasture, and 50 or so acres of cropland. We redid our stalls, ventilation, lighting, and pit. We acquired our new land on November 1, 2017 and moved on July 9, 2018. Everything went smoothly. In the winter, we house a dozen dry cows or pregnant heifers. We still have Rose, who won Milking Yearling class at the 2014 Royal Fair. Her due date is February 10 and she was inseminated with sexed semen from Yellow. We also have Manguel, first-place Junior 2YearOld at this year's Royal fair.



Money Making
Rubicom MANGUELVG-87 2Yr
1st Junior 2-Yr-Old *Royal* 2019



Photo : Manguel@Vtoldi Fletcher



MONEY MAKING

AYRSHIRES

PREFIX
MONEY MAKING



Our current herd classification is 1 EM, 1 EX, 19 VG and 26 G. Average production comes in at 8,200 kg at 4.15% fat and 3.29% protein. We have a quota of 42 kg fat/day and we would like to increase that to approximately 46 or 47 kg. This fall, Money Making Perfect Mustang was the first Excellent cow of our prefix.

Our philosophy is to breed our best families and most productive heifers. With that in mind, 60% of our herd is inseminated with semen from Black Angus. The first breeding of our best cows is done with sexed semen, because we like for each of them to have at least one heifer in the herd.



We like fairs, especially Ormstown and Royal. We also want to sell a few of our best cows to ensure the continuity of our bloodlines elsewhere and to make buyers happy.

Our family includes 5-year-old Anna, born June 26, 2014, 4-year-old James, whom we welcomed on January 25, 2016, and 2-year-old Elliott, born on January 17, 2018. We're expecting our fourth child in June 2020. We want to work on our farm with our children and teach them all about living in the country with cows. We hope they like it, otherwise they'll find it quite boring! Hihi!



Money Making Magellan ROSEE
5th Intermediate Calf *Royal* 2019

Oakburn Money Making MAYBELINE
1st Junior Yearling Ormstown 2019

MARBRAE ENTERPRISES

PREFIX
MARBRAE

OWNERS: MACFARLANE FAMILY

1838, ENGLISH RIVER ROAD,
HOWICK (QUEBEC) J0S 1G0

HERD SUMMARY:

200 HEAD, INCLUDING 80 LACTATION COWS

CLASSIFICATION: 11 EX MULT. · 4 EX · 55 VG · 28 GP

PRODUCTION AVERAGE:

9123 KG 4.25%F 3.26%P (258-266-256)

Marbrae Enterprises, a Family History

The Marbrae prefix came about in 1911, when Albert MacFarlane acquired a farm with 100 acres of land. Over the years, the family business was passed down from one generation to another, while always evolving. In 1984, Brian formed a partnership with his father, Brodie, and Holly, Brian's wife, later joined them in 1993. Twenty years later, in 2013, Marbrae Enterprises was formed with their oldest son, Dale. Their daughter Rachel also works fulltime on the farm, while Julie is a consulting services representative at CIAQ and Kevin is studying Sciences at John Abbott College. Julie and Kevin also help on the farm whenever they can. Finally, Brian's brother, Bruce, who recently retired, also provides assistance with the daily farm chores and field work.

This business currently owns a 200-head herd, of which 80 are tie stall cows. Most heifers are however raised in free stall housing, which gives them an advantage at sales as they are used to both housing styles. The MacFarlane's cultivate 300 acres of corn, 110 acres of soya, 30 acres of wheat, 150 acres for hay and pastures and they also run a 3,500-tap sugar-bush operation!

Four-time recipient of the Master Breeder Award, Marbrae's strength is primarily their cow families. The cow who had the strongest impact in the herd is undoubtedly Marbrae Persis, EX-92-4E, with 6* (Massé Perceval). Her most famous daughters are: Marbrae Peru, EX-94 4E 2*, daughter of Duo-Star Normandin who produced more than 85,000 kg in six lactations, and Marbrae Perlita ET, EX-92 4E (Normandin), dam of the bull Powerstroke at Semex. This exceptional family also includes Marbrae Rockstar's Prosperity ET, VG-87 at 2 years old, dam of Bigtime, also at Semex. Bigtime was the top selling Ayrshire bull at Semex two years in a row and has over 800 progeny in Canada alone. He is being used worldwide, with continued success and his first daughters are starting to calve now.



Marbrae PERU EX 94 4E 1*

Marbrae PERSIS EX 92 4E 6*

Marbrae Rhythm's PETAL EX 91 8E

MARBRAE ENTERPRISES

PREFIX
MARBRAE

Another cow who has had a significant influence in the herd is Marbrae BBBK Peta ET, EX-94-3E 9*, who's progeny counts 7 Excellent daughters, 4 Very Good, and 1 Good Plus. Another remarkable daughter of Peta is Marbrae Rhythm's Petal EX-91-9E who is now 14 years old and who calved in December with a heifer calf for her 11th lactation as well as Marbrae Petrina-ET EX-93-6E. The MacFarlane's not only sell good animals, they also have an eye for buying exceptional ones. For example, in 2006, they bought Blackaddar Kierra, VG-85 7*, a daughter of Kildare BBK Kellyann and Conn. Kierra's offspring distinguish themselves by their high milk production and great classifications.



To tap into the Persis Family's genetic gold vein, several embryo harvests have been carried out to obtain the best breeding results and improve the herd's genetic potential. We are currently flushing Persis' granddaughters and great granddaughter with the top Ayrshire bulls. Animals from this family show great consistency in their production levels as well as in their superior conformations. Generation after generation, the breeding philosophy has always stayed the same, the ideal cow, in their mind, is a well-balanced cow that can produce milk as easily as

possible. Genetic breeding selections are made with the objective of improving production, classification, and their best cow families' genomics. In order to achieve this, they select balanced bulls with no major flaws and having top genetic potential.



Over the years, the business has evolved to keep pace with changes in the industry. They expanded the size of the herd to mitigate quota increase, demand for fresh young cows, and

the integration of new generations in the business. The current objective is to improve the herd's average while having a good classification and maximum efficiency. For Dale, it is to raise the 6th generation of MacFarlane's while at the helm of the family business with his better half, Christine and daughter, Hailey who turned two in January! Same thing for Rachel, but with an added bonus of time to travel around the world!

Everyone at Marbrae look forward to opening their doors in February for a special viewing of some of their top cow families and hope the visitors enjoy what they see!



DIRECTIONS

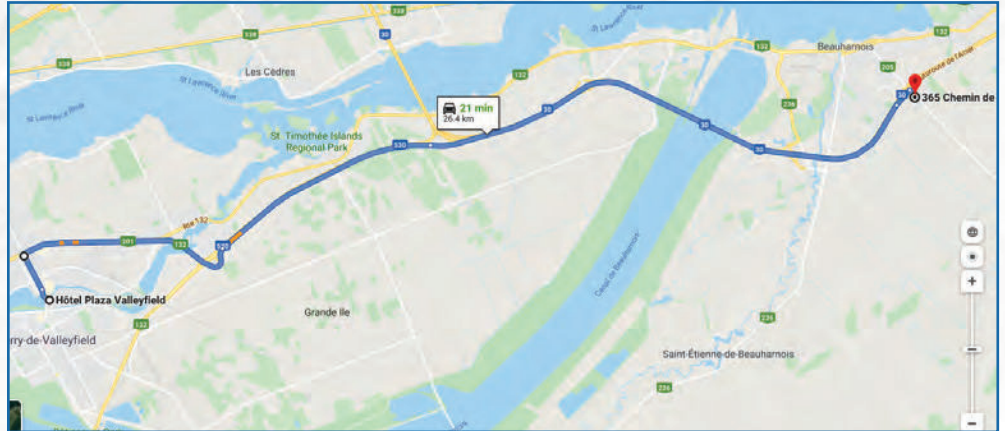
HOTEL PLAZA VALLEYFIELD

(40 Avenue du Centenaire, Salaberry-de-Valleyfield, J6S 3L6)

TO ST-CLÉMENT FARM

(365 Chemin de la Beauce, Beauharnois, J6N 3B8), 21 minutes.

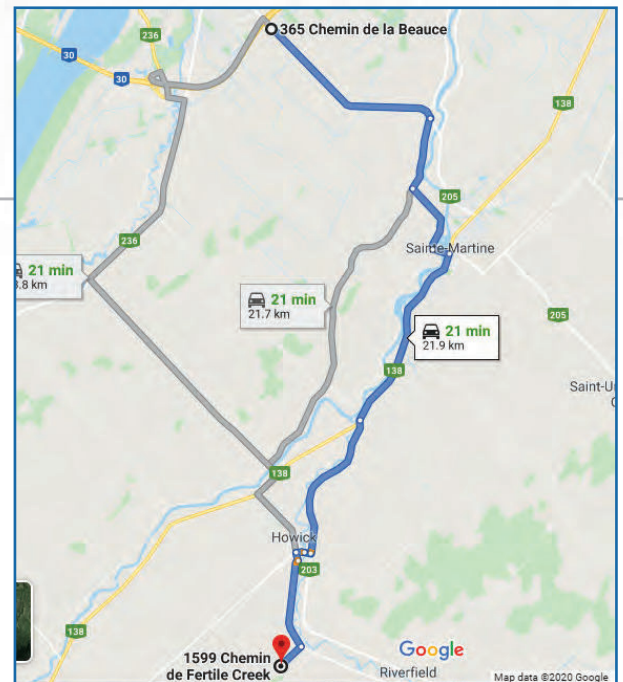
1. From the hotel parking lot, turn right onto Avenue du Centenaire, which becomes Rue de Grande-Île.
2. Turn right onto Boulevard Monseigneur-Langlois / QC-201 South (sign for QC-132).
3. Follow Boulevard Monseigneur-Langlois until it merges with Autoroute 530 East.
4. Keep right at the junction to exit 12 and merge onto Autoroute 30 East.
5. Take exit 26 towards Chemin de la Beauce / QC-205 South.
6. Turn right onto Chemin de la Beauce. Your destination is on the right.



ST-CLÉMENT FARM TO MONEY MAKING AYRSHIRES

(1599 Chemin Fertile Creek, Howick, J0S 1G0), 20 minutes.

1. Head Southeast on Chemin de la Beauce / QC-205 South (5 km).
2. Turn right onto Chemin du Grand Marais (1.9 km).
3. Turn left onto Rang Dubuc (1.9 km).
4. Turn left onto Rue du Pont (450 m).
5. Turn right onto Rue Saint-Joseph / QC-138 West (5.1 km).
6. Turn left onto Rang du Moulin / QC-203 South (4 km).
7. Turn right onto Montée des Irlandais.
8. Turn left onto Rue Colville (220 m).
9. Turn right onto Chemin de la Rivière-des-Anglais (2.3 km).
10. Turn right onto Chemin Fertile Creek.
The farm is the first one on the left.



MONEY MAKING AYRSHIRES TO MARBRAE ENTERPRISES

(1838 Chemin de la Rivière-des-Anglais, Howick, J0S 1G0), 2 minutes.

1. From Money Making Ayrshires, turn right, heading Northeast.
2. Turn right onto Chemin de la Rivière-des-Anglais.
The farm is on the right.

